

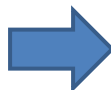
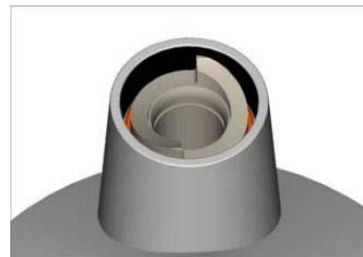
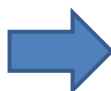
KITCHEN MACHINES
Except Prospero & kMix Series
STAINLESS STEEL WHISKS**Date: 19.11.2019**Introduction:

A change of tool has been implemented in order to improve whisking performances and processing time. The change to stainless steel prevents corrosion (after prolonged dishwasher use) seen in the aluminium coated whisk.

Aluminium-coated and stainless-steel whisks have been replaced by new stainless-steel versions (Chef and XL/Major size) from date code 19B05.

New whisks will be available for KM models pre 2008 (circlip type planet hub) and post 2008 (bayonet type planet hub, exposed and recessed).

When ordering the new whisk check the KM planet hub version:

circlip shaft (pre 2008)**CIRCLIP TYPE PLANET HUB****bayonet shaft (post 2008)**

exposed bayonet planet hub



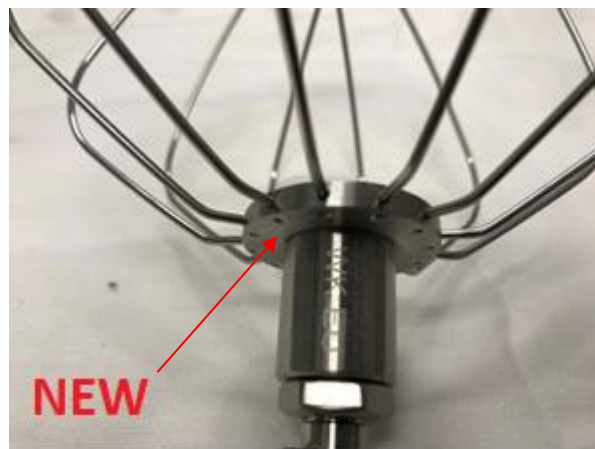
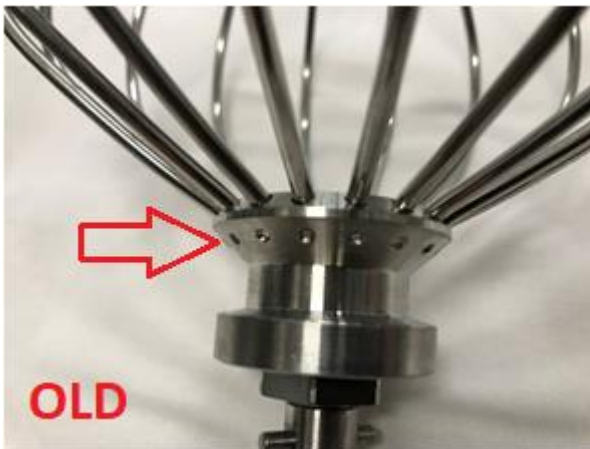
recessed bayonet planet hub



Technical changes:

The diameter of the Stainless-Steel Whisk wire and the number of wires have been reduced, which consequently increases the gap between the wires to improve whisking performances.

The wire holes are drilled perpendicular to the shaft as opposed to the old whisk wires which are drilled at an inclined angle (see below pictures).



The below table shows the old and new spare codes for the whisks according to the model of KM (pre or post 2008, bayonet or circlip planet hub):

Kitchen Machine	Planet hub type	Old Whisk spare code	New whisk spare code
Chef models (pre 2008)	Circlip	KW716839, KW716841	KW717151
Major models (pre 2008)	Circlip	KW712208, KW716840, KW716842	KW717152
KVC7, KVC50, KVC51, KVC3	Bayonet, no circlip	KW712212	KW717142
KVL8, KVL61, KVL60, KVL4, KCC90, KPL90, KM07/08/09	Bayonet, no circlip	KW712208, KW716840, KW716842	KW717138

The stock of old whisks will remain available in DLS until exhaustion.